



Ford Yacht Club

Race Committee

29500 South Pointe Road

Grosse Ile, MI

2022 FYC Regatta

Skipper's Packet



Attachment A

Ford Yacht Club
Race Committee

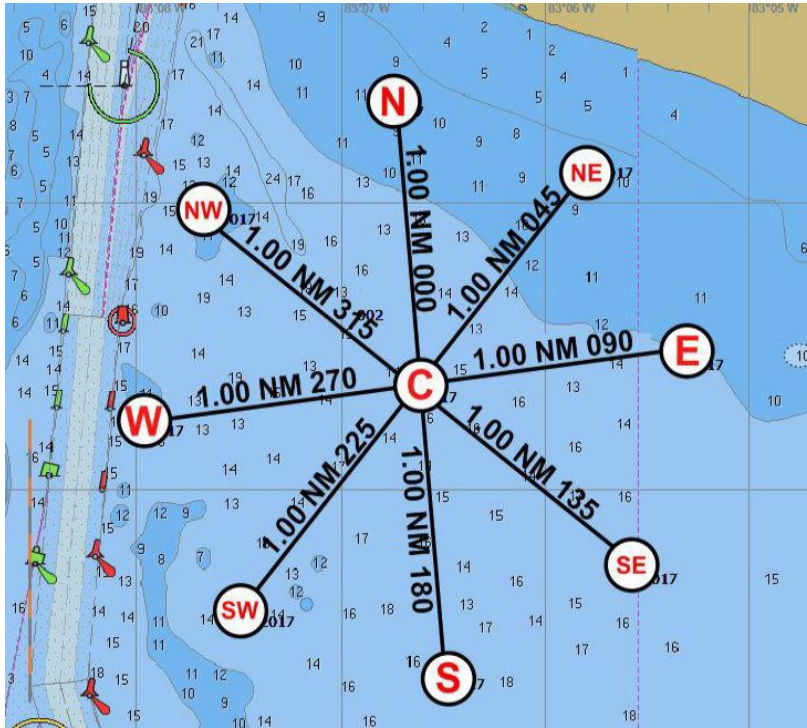
2022 FYC Regatta Courses

Approximate	Wind Direction	Spinnaker	Distance	JAM	Distance	R/C Help	to first mark
335-15 (359)	N1	C-Np-Wp-Sp-C	4.9	C-Np-Sp-C	4.1	0 to 4 (light and	
	N2	C-Np-Wp-Sp-Np-C	6.9	C-Np-NWp-EP-Np-C	6	5 to 8 (diminishing	
	N3	C-Np-Wp-Sp-Np-Sp-C	9	C-Np-NWp-SWp-NWp-SWp-Sp-C	7.8	7 to 14 (steady)	
	N4	C-Np-Wp-Sp-Np-Sp-Np-C	11	C-Np-Wp-Sp-NEp-SEp-NEp-Np-C	10.4	12+ (steady)	353
Wind Direction		Spinnaker	Distance	JAM	Distance		
10-30	NE1	C-NEp-NWp-SWp-C	4.8	C-NEp-SWp-C	4	0 to 4 (light and	
	NE2	C-MFp-NWp-SWp-Np-Fn-C	6.8	C-MFp-Np-Sp-Fn-C	6.00	5 to 8 (diminishing	
	NE3	C-NEp-NWp-SWp-NEp-SWp-C	8.8	C-NEp-Np-Wp-Np-Wp-SWp-C	7.8	7 to 14 (steady)	
	NE4	C-NEp-NWp-SWp-NEp-SWp-NEp-C	10.8	C-NEp-NWp-Sp-EP-Sp-EP-NEp-C	10.3	12+ (steady)	38
Wind Direction		Spinnaker	Distance	JAM	Distance		
56-105	E1	C-EP-Np-Wp-C	4.8	C-EP-Wp-C	4	0 to 4 (light and	
	E2	C-Fn-Np-Wp-Fn-C	6.8	C-Fn-MFp-Sp-Fn-C	6.00	5 to 8 (diminishing	
	E3	C-EP-Np-Wp-EP-Wp-C	8.8	C-EP-NEp-NWp-NEp-NWp-Wp-C	7.8	7 to 14 (steady)	
	E4	C-EP-Np-Wp-EP-Wp-EP-C	10.8	C-EP-Np-SWp-Sp-SWp-Sp-EP-C	10.3	12+ (steady)	84
Wind Direction		Spinnaker	Distance	JAM	Distance		
106-145	SE1	C-SEP-NEp-NWp-C	4.8	C-SEP-NWp-C	4	0 to 4 (light and	
	SE2	C-SEP-NEp-NWp-SEp-C	6.8	C-SEP-EP-SWp-SEp-C	6.00	5 to 8 (diminishing	
	SE3	C-SEP-NEp-NWp-SEp-NWp-C	8.8	C-SEP-EP-Np-EP-Np-NWp-C	7.8	7 to 14 (steady)	
	SE4	C-SEP-NEp-NWp-SEp-NWp-SEp-C	10.8	C-SEP-NEp-Wp-SWp-Wp-SWp-SEp-C	10.3	12+ (steady)	129
Wind Direction		Spinnaker	Distance	JAM	Distance		
156-195	S1	C-Sp-EP-Np-C	4.9	C-Sp-Np-C	4.1	0 to 4 (light and	
	S2	C-Sp-EP-Np-Sp-C	6.9	C-Sp-SEp-Wp-Sp-C	6	5 to 8 (diminishing	
	S3	C-Sp-EP-Np-Sp-Np-C	9	C-Sp-SEP-NEp-SEP-NEp-Np-C	7.8	7 to 14 (steady)	
	S4	C-Sp-EP-Np-Sp-Np-Sp-C	11	C-Sp-EP-NWp-Wp-NWp-Wp-Sp-C	10.4	12+ (steady)	175
Wind Direction		Spinnaker	Distance	JAM	Distance		
196-244	SW1	C-SWp-SEp-NEp-C	4.8	C-SWp-NEp-C	4	0 to 4 (light and	
	SW2	C-SWp-SEp-NEp-SWp-C	6.8	C-SWp-Sp-NWp-SWp-C	6.00	5 to 8 (diminishing	
	SW3	C-SWp-SEp-NEp-SWp-Nep-C	8.8	C-SWp-Sp-EP-Sp-EP-NEp-C	7.8	7 to 14 (steady)	
	SW4	C-SWp-SEp-NEp-SWp-NEp-SWp-C	10.8	C-SWp-SEp-Np-NWp-Np-NWp-SWp-C	10.3	12+ (steady)	219
Wind Direction		Spinnaker	Distance	JAM	Distance		
254-290	W1	C-Wp-Sp-EP-C	4.9	C-Wp-EP-C	4.1	0 to 4 (light and	
	W2	C-Wp-Sp-EP-Wp-C	6.9	C-Wp-SWp-Np-Wp-C	6	5 to 8 (diminishing	
	W3	C-Wp-Sp-EP-Wp-EP-C	9	C-Wp-SWp-SEP-SWp-SEP-EP-C	7.8	7 to 14 (steady)	
	W4	C-Wp-Sp-EP-Wp-EP-Wp-C	11	C-Wp-Sp-NEp-NWp-NEp-NWp-Wp-C	10.4	12+ (steady)	263
Wind Direction		Spinnaker	Distance	JAM	Distance		
291-334	NW1	C-NWp-SWp-SEp-C	4.9	C-NWp-SEP	4.1	0 to 4 (light and	
	NW2	C-NWp-SWp-SEp-NWp-C	6.9	C-NWp-Wp-NEp-NWp-C	6	5 to 8 (diminishing	
	NW3	C-NWp-SWp-SEp-NWp-SEp-C	9	C-NWp-Wp-Sp-Wp-Sp-SEp-C	7.8	7 to 14 (steady)	
	NW4	C-NWp-SWp-SEp-NWp-SEp-NWp-C	11	C-NWp-SWp-EP-Np-EP-Np-NWp-C	10.4	12+ (steady)	308

Please check courses carefully

2022 Buoy Locations

(same as 2022 WSSC WNATR Locations)



C	N42.01.3854	W083.06.6223
E	N42.01.4959	W083.05.3077
NE	N42.02.1653	W083.05.8038
N	N42.02.3802	W083.06.7850
NW	N42.02.0057	W083.07.6806
W	N42.01.2687	W083.07.9782
SW	N42.00.6022	W083.07.4780
S	N42.00.3872	W083.06.4776
SE	N42.00.7527	W083.05.5806












Attachment B

Ford Yacht Club
Race Committee

Starting information

CLASS	CLASS FLAG	Rating
Spinnaker A	Blue	TBD _____
Spinnaker B	Yellow	TBD _____
One Design / Spinnaker C	Green	TBD _____
JAM A	White	TBD _____
JAM B	Purple	TBD _____
Cruising Class	FYC Burgee	ALL

Sample starting sequence per RRS rule 26

Flag signal	Number of sound signals when raised	Number of sound signals when lowered	Description
	1 ↑ 		Warning Signal. 5 minutes to race start when class flag raised.
	1 P ↑ 		Preparatory signal. 4 minutes to start when P flag raised. Flag P used or if a starting penalty applies I, Z, Black flag or I over Z is used in place of P.
	1 P ↓ 	 Long sound	Preparatory signal. P flag removed 1 minute before start. Flag P used or if a starting penalty applies I, Z, Black flag or I over Z is used in place of P.
	1 ↓ 		Start Signal. Race start when class flag removed.



Individual
Recall
'X'

Over Early –
Individual
Recall



General
Recall

Over Early –
General Recall

